

SnapLoc Details

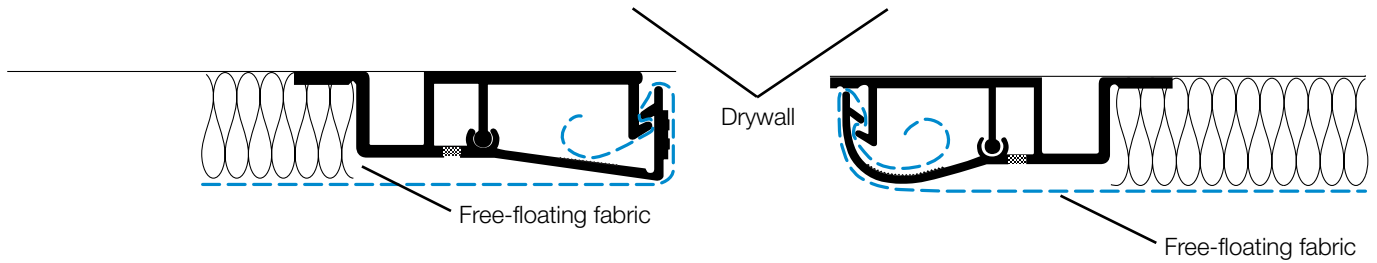
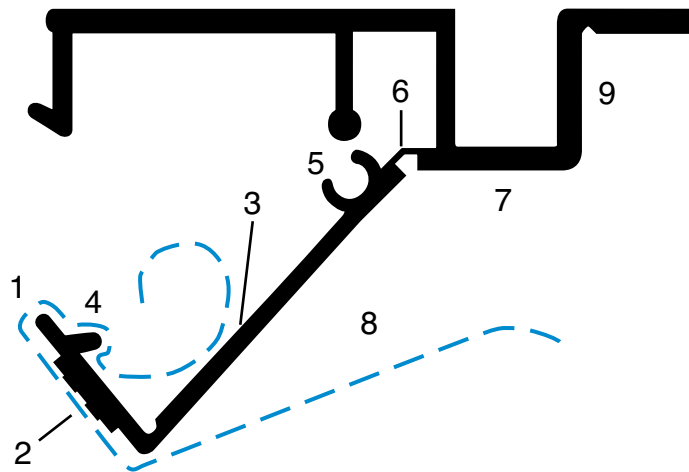


Figure 1. SnapLoc® 90 (closed)

Figure 2: SnapLoc® Radius (closed)



The SnapLoc System

1. Fabric is mechanically locked into the jaws of the profile.
2. The exterior glue surface holds the fabric in place at the outside edge of the profile, which eliminates a “picture frame” effect.
3. The secondary glue surface offers additional grip and support and creates the further tensioning and stretching of the fabric.
4. Overlapping-hook design crimps the fabric and locks it into place, accepting both thick and thin fabrics.
5. Ball-and-socket assembly maintains compression to keep the profile closed and to prevent the cover from shifting as the fabric expands and contracts under tension.
6. The lever action of the flexible hinge holds the fabric tautly. The hinge allows multiple openings and closings to permit reupholstery without having to replace the profile.
7. Basting surface allows the fabric to be tacked, cured, stretched, and aligned.
8. The tapered design makes it possible for the fabric to float freely to avoid a “picture frame” effect.
9. The ½ in. height of the profile allows the total integration with ½ in. Classic StretchWall, ½ in. wood panels, and/or ½ in. infill materials.

SnapLoc Details

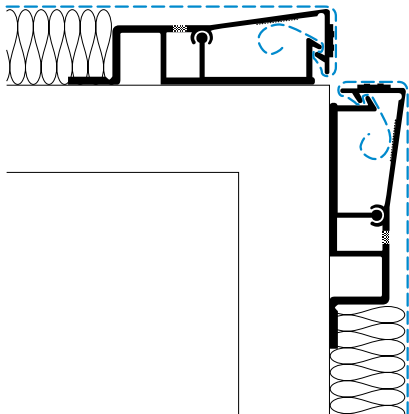


Figure 3: SnapLoc® 90
Quirk-reveal outside corner

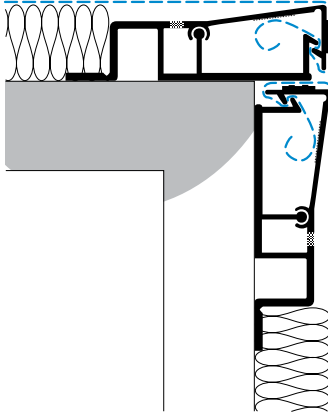


Figure 4: SnapLoc® 90
Outside wrapped corner

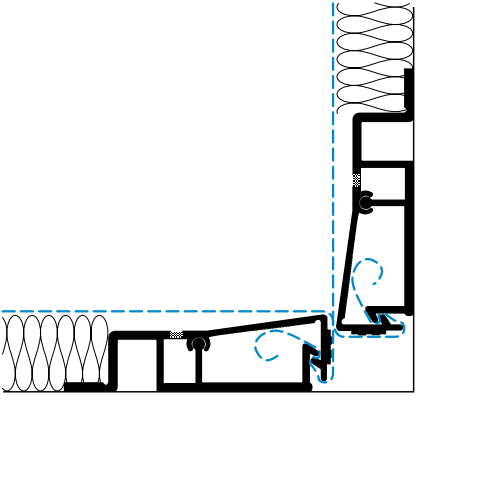


Figure 5: SnapLoc® 90
Tight inside corner

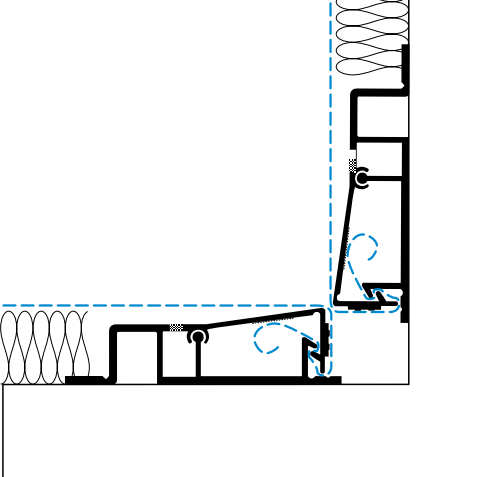


Figure 6: SnapLoc® 90
Inside corner



Figure 7: SnapLoc® 90
Butt joint



Figure 8: SnapLoc® Radius
Butt joint